

# Community Newsletter

PO Box 50, Lake Grace WA 6353 Ph: (08) 9890 2500 Fax: (08) 9890 2599 Email: shire@lakegrace.wa.gov.au



## From the CEO

It's Council Meeting this week and residents and ratepayers are reminded that they are welcome to attend the meetings and observe the process of how the Shire of Lake Grace operates. Council meetings commence at 3.30Pm on the 4th Wednesday of each month (except January where there is no meeting).

Council also sets aside time early in the meeting for "Public Question Time" to allow members of the public to ask questions relating to the Shire activities. The public is requested to present the questions prior to the meeting to allow the answers to be researched if necessary. Shire Agendas are published on the shire website several days prior to the meeting where it may be viewed by the public.

Prior to the meeting this month there will be a citizenship ceremony, a presentation by a representative from the RAC regarding the conducting of speed trials and a presentation from a representative of the Department of Primary Industries and Regional Development (DPIRD) on the progress of the Regional Drought Resilience Planning project of which the Shire of Lake Grace is a member. This project is both federally and state government funded and is still in the planning stages.

Some items in the meeting agenda this month include the location of a used sea container at the rear of 26 Stubbs St Lake Grace for additional storage, the draft Shire Bushfire Risk Management Plan 2022-2027 and an access agreement to allow access through private property to a new emergency water supply soon to be up and running. As usual there are the usual monthly Financial Reports indicating the Shires healthy position.

In addition there are minutes of several Committees of Council including this month the Shire of Lake Grace Tourism Advisory committee (SoLGTAC). The Lake Grace Library/Community Resource Centre Management Committee and the Local Emergency Management Committee (LEMC).

*Alan George*  
Chief Executive Officer

## Oximeters

The State Health Department is offering free pulse oximeters to vulnerable members of the community.

A pulse oximeter is a small peg-like device that clips onto your finger to read your heart rate and blood oxygen level.

The Department of Health WA has supplied Oximeters to distribute to community members who fit within the following categories:

- **50+ years (aboriginal descent)**
- **60+ years**
- **Pregnant**

Only collect if you are well and have not tested positive for COVID-19. If you have received a positive COVID-19 test result, the Department of Health will contact you and provide further information.

If you are eligible you can pick one up from the Lake Grace Hospital administration office, or call 9890 2222.

One per household is available.



## Coming Events

### *Varley Social Nights*

Saturday 26 March  
Sunday 3 April  
Friday 10 June  
Friday 24 June

### *S.T.R.I.N.G.S*

Wednesday 23 March

### *Movie Night*

**Back to the Future**  
Lake Grace Visitor Centre  
25th March

## Ordinary Council Meeting

An Ordinary Council Meeting will be held on  
**Wednesday**  
**23 March 2022**  
from 2.30pm at the  
Council Chambers,  
Administration Building.

The Agenda will be  
available on

[www.lakegrace.wa.gov.au](http://www.lakegrace.wa.gov.au)

*Everyone Welcome*

A minimum of 15 minutes is set aside for public question time, giving members of the public an opportunity to ask questions relating to Shire activities.

# Community Infrastructure Service

Our staff carried out the following works:

## Roadworks

The Lake Grace Maintenance Grader has carried out grading on:

- Elliott Rd
- Old Ravey Rd
- Mallee Hill Rd
- Burngup Rd

The Newdegate Maintenance Grader has carried out grading on:

- Bidly -Buniche Rd
- Magenta Rd
- Haig Rd
- Bidly Camm Rd

The Lake King and Varley Maintenance Grader has carried out grading on:

- Hatters Hill Rd
- Fitzgerald Rd

## Parks & Gardens

The Parks and Gardens Crew have carried out the following work:

### Lake Grace

- Mow oval
- Visitor Centre
- Lawns at unoccupied staff housing
- Railway garden maintenance
- Calthrop inspection
- Lake Grace Playgroup
- CWA McMahon St playground
- Hockey oval retic
- Street weeding in townsite
- Doctor's house retic and lawn
- Lake Grace cemetery

### Newdegate

- Water un-reticulated gardens and pots
- Remove dead rose and plant new at Gazebo
- Remove old sleepers and tree roots from lawn edges
- Levelling gravel for honor board
- Weeding main st
- Spray weeds around town



*Above: Newdegate Country Club extensions*

### Lake King

- Sports ovals maintenance
- Lake King Playground
- Lake King Toilet septic

### Varley

- General townsite maintenance

### Buildings

The Building Maintenance Crew have carried out the following work on the following facilities:

- RSL Building maintenance
- Newdegate Medical Centre
- Newdegate Pioneer Park
- Lake Grace toilet maintenance
- Newdegate Pavilion
- Newdegate Hockey toilets
- Lake King public toilets

### Operations

- Construction of Newdegate hockey toilets
- Newdegate hockey lights
- Signage
- Machinery to Lake King
- Deliver sand and blue metal to Lake King
- Lake Grace cricket pitch



*Newdegate Hockey toilets*

*Craig Elefsen*

Manager Infrastructure Services



# Community Information

## Office Open Hours

Monday - Friday

8.30am - 4.00pm

Staff can be contacted by phone between 8am - 5pm

## Licensing Payments

All licensing payments are to be made in person at the Shire of Lake Grace Administration office,  
1 Bishop Street, Lake Grace.

**Monday to Friday from 8:30am to 4:00pm**

## Driving Assessor

The Practical Driving Assessor (PDA) will be at the Shire of Lake Grace Office on:

**Friday - Friday 8 April**

**Friday - Friday 6 May (to be confirmed)**

Bookings are essential for all Practical Driver's Licence Assessments and we advise booking in advance as there is often a waiting list.

All bookings to be made at the Shire office on 9890 2500 until further notice.

Lake Grace has one assessment day each month held on the first Friday of the month.

For more information go to: [www.transport.wa.gov.au](http://www.transport.wa.gov.au).

## Lake Grace Swimming Pool

**Opens: 12noon - 6pm daily**

**Early morning swimming:**

Monday, Wednesday and Friday from 5.30am - 7.00am

Please note: when there are any changes in the pool open hours it will be advertised on the Pool Facebook, Shire Facebook pages and on the front door at the pool.

## Libraries

**Lake Grace Public Library** School Place Absolon St

Monday - Friday 9am - 5pm

Closed for lunch 12.30 - 1pm

**Newdegate Public Library** Collier St

Monday - Thursday 8.30am - 4.30pm

Closed for lunch 12noon - 1pm

Friday 9am - 2pm

**Lake King Library** Newdegate/Ravensthorpe Rd

Tuesday and Thursday 8.30am - 3.30pm

## Building Surveyor

Building Surveyor, can be contacted through the Shire Office on 9890 2500

or email [shire@lakegrace.wa.gov.au](mailto:shire@lakegrace.wa.gov.au).

## Town Planning & Building

The Shire's Town Planner consultant Joe Douglas, can be contacted via the Shire on 9890 2500

or email [shire@lakegrace.wa.gov.au](mailto:shire@lakegrace.wa.gov.au).

## Environmental Health

The Shire's Environmental Health Officer, Brendon Gerrard. Can be contacted via the Shire on 9890 2500 or email [shire@lakegrace.wa.gov.au](mailto:shire@lakegrace.wa.gov.au).

## Tip Times

**Lake Grace**

Monday & Wednesday 9am - 2pm

Saturday & Sunday 9am - 4pm

**Newdegate**

Wednesday 9am - 1pm

Saturday 9am - 1pm

**Lake King and Varley**

Open every day

## Recycling Services

Household Waste Collection is a weekly service and collected each Tuesday for Lake Grace, Newdegate, Lake King & Varley.

**Recycling** is a fortnightly service and alternates between Lake Grace and Newdegate. See below for the upcoming recycling collection dates.

**Please Note:** There is no kerbside recycling collection service in Lake King or Varley.

Lake Grace	Newdegate
Tuesday 29 March	Tuesday 22 March
Tuesday 12 April	Tuesday 5 April

The recycling bins are collected by Warren Blackwood Waste and transported to a recycling facility. If items which are not recyclable are found the content can't be recycled and the load will be directed to the landfill.

If an item is covered in food, it is not recyclable. Food is one of the worst contaminants in the recycling process. By using the yellow top recycling bin correctly you are contributing, in a combined community effort, to reduce the amount of rubbish that is directed to landfill facilities each year.

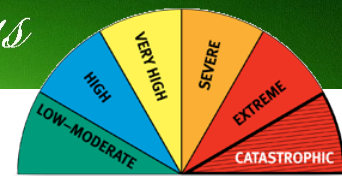
For more information on Waste Management visit the Shire's website [www.lakegrace.wa.gov.au](http://www.lakegrace.wa.gov.au).

Check our Facebook page

<https://www.facebook.com/ShireofLakeGrace/>

Check out our website

[www.lakegrace.wa.gov.au](http://www.lakegrace.wa.gov.au)



The State Government has recently announced that new *Work Health and Safety Act 2020* will come into effect at the end of March 2022.

This sees a shift from the implied requirement for volunteers to be included in their parent organisations health and safety systems to an explicit requirement. As we navigate these amendments in legislation, we will see some changes to how we work in the Bush Fire Response space. Please bear with us as we work towards the new requirements.

The first change you will see is the requirement for volunteer fire responders to be trained.

We are able to deliver local Rural Fire Awareness training through the Shire at a venue near you. Contact your local FCO's to register your interest.

*Matt Castaldini*

Community Emergency Services Manager

## Facility Hire

Please contact the Shire to book Shire facilities.

You are required to read the COVID Safety Plan before using the facility.

People, groups, clubs who hire public buildings are still required to:

- Complete the WA Government Safety Plan
- Register users of the facility
- Monitor entry and exits
- Disinfect surfaces, doors handles, table chairs, showers, toilets regularly.

At the end of the event the requirements are:

- Return tables and chairs to designated storage area
- Put all rubbish into the outside sulo bins provided, including rubbish in toilets
- Ensure all stoves and lights are turned off
- Report any damages incurred while hiring facility
- Facility to be left in the same condition as found upon arrival including the floors
- All external doors are closed and locked;

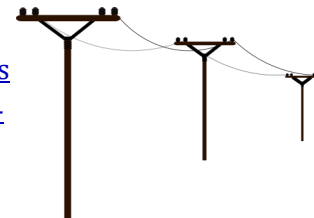
This is most important as often doors are not locked when cleaners arrive.

Shire cleaners are responsible for the general cleaning of a facility, however they are not responsible for cleaning up and putting away tables and chairs after a function.

## Extended Power Outages

The \$80 payment is an acknowledgement of the inconvenience for customers who have experienced a long unplanned outage while waiting for repairs to be completed and restoration of power to occur.

Go to: <https://www.westernpower.com.au/faults-outages/make-a-claim/extended-outage/>



## Seen a faulty streetlight?

Western Power has automated streetlight fault reporting, making it easier to report faulty streetlights.

If a streetlight doesn't turn on, turn off or flickers, let Western Power know using the streetlight reporting tool at:

<https://westernpower.com.au/faults-outages/report-a-faulty-streetlight/> or call on 13 10 87