

Community Newsletter

PO Box 50, Lake Grace WA 6353 Ph: (08) 9890 2500 Fax: (08) 9890 2599 Email: shire@lakegrace.wa.gov.au



From the CEO

Cr Len Armstrong Shire President, Craig Elefsen MIS, Cr Ross Chappell Deputy Shire President and myself attended the Lakes Sub Group meeting at the Shire of Dumbleyung on Tuesday 6 July.

Gary Hall from the Electoral Commission came to Lake Grace on Wednesday 7 July to meet with Chris Paget DCEO, Racelis Rose EA and myself in Council Chambers in preparation for the Council Elections in October.

New Town Planning Consultant

The Shire has engaged the service of Joe Douglas from Exurban as our Town Planning Consultant from 1 July 2021. We are looking forward to working with Joe again, please ensure that you provide as much information as possible including contact details so that he can manage your enquiries in a timely manner. Please contact the Shire office as the first point of contact – the preference is email.

Plant Operator/Driver/General Hand

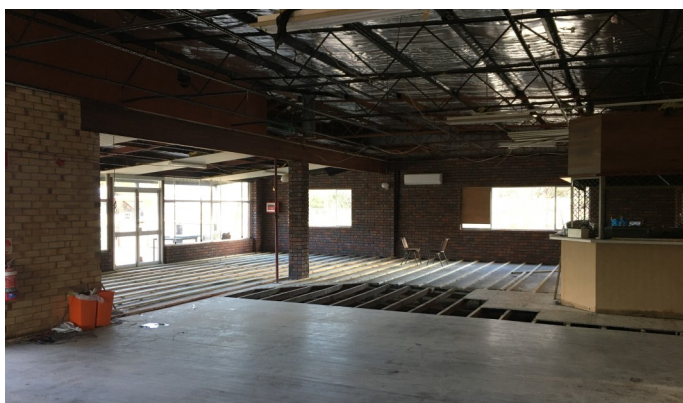
We are still looking for experienced plant operators who can see themselves as part of the Infrastructure team.

Manager Corporate Services position

The Manager Corporate Services position closed on Friday 9 July and we will keep you updated during the process of engaging a new member of the Management Team.

Newdegate Country Club

I had the pleasure of checking out the Newdegate Country Club renovations on Thursday 8 July. The space is transforming into an open plan function area.



Coming Events

Matt Hale

Newdegate Sports Pavilion
6.30pm Thursday 15 July

Newdegate Field Days

Newdegate Sports Facility
Wednesday 1 September
Thursday 2 September

Local Government Week

Perth
Monday 20 September until
Wednesday 22 September

Ordinary Council Meeting

An Ordinary Council Meeting will be held on **Wednesday 28 July 2021** from 3:30pm at the Council Chambers, Administration Building. The Agenda will be available on www.lakegrace.wa.gov.au

Everyone Welcome

A minimum of 15 minutes is set aside for public question time, giving members of the public an opportunity to ask questions relating to Shire activities.

Alan George
Chief Executive Officer

Community Infrastructure Service

After recent rain events please be reminded to drive to road conditions on all gravel roads as there may be water across roads in some parts of the shire.

Please be advised that there are gravel wind-rows present on Buniche North Rd near the CBH bins, and on Witham Rd near Edwards Rd, works on these jobs have been held up due to rain. Works will re commence as soon as its dry's out enough.

This fortnight our works crew have completed the following roadworks and maintenance;

Roadworks

The Lake Grace Maintenance Grader has carried out grading on:

- Mallee Hill Rd
- North Burngup Rd
- Bairstow Rd

The Newdegate Maintenance Grader has carried out grading on:

- Ardler Road
- Neilds Road
- Giles Road
- Kane Road

The Lake King and Varley Maintenance Grader has carried out grading on:

- Lake King Norseman Road
- Stennetts Lake Road

Parks & Gardens

The Parks and Gardens Crew have carried out the following work:

Lake Grace

- Marking and mowing of sport ovals
- Mowing Lake King sport oval
- Town slashing
- Tidy up of BBQ rest area
- Mow/slash Dewar St weeds/lawn
- Filling in pot holes around town

Newdegate

- Old/dead plant removal from Pioneer Park
- New soil to Pioneer park

Buildings

The Building Maintenance Crew have carried out the following work:

- Lake King Pavilion bolt & door locks
- Varley Town Hall maintenance & panic bolt install
- Newdegate Hainsworth signs install
- Lake Grace playgroup maintenance
- Install wall mounted first aid kit to Lake Grace Pavilion
- Lake Grace day care door repairs

- Lake Grace Medical Centre consult room maintenance
- Newdegate Pavilion maintenance to showers/ fans & panic bolts

Operators

The Machine Operator Maintenance Crew have carried out the following work:

- Rural road signs
- Data collection for road traffic counters
- Carting gravel to Buniche Rd
- Witham Rd roadwork signs
- Mallee Hill Rd roadwork signs
- Repairs to machinery

Other Works

- 6 monthly fire extinguisher service to all Shire owned buildings
- Contractors have finished upgrading the Lake Grace Airstrip's Lighting System. Thanks to Aerodrome Management Services, Lake Grace Earthmoving and shire staff.

Are you ready for a new challenge?

We are seeking experienced, reliable, enthusiastic individuals to join our Infrastructure Team.

Applicants will be responsible for various tasks and duties associated with the maintenance and renewal of the Shire's road network. You will be required to have previous experience in operating semi side tippers and associated plant and equipment such as rollers, loaders and tractors associated with road construction. We welcome diverse ethnic and cultural backgrounds to apply.

The ideal candidate will hold a current unrestricted HC License, a valid WA White Card, be a team player and are safety and self motivated. This could be the opportunity you have been looking for.

There is no closing date for applications however applicants are encouraged to apply as soon as possible.

Craig Elefsen

Manager Infrastructure Services



Shire of Lake Grace

Community Information

Office Open Hours

Monday - Tuesday - Wednesday - Friday
8.30am - 4.30pm

Thursday 8.30am - 4.00pm

Staff can be contacted by phone between 8am - 5pm

Transport and Licensing

All licensing payments are to be made in person at the Shire of Lake Grace Administration office, 1 Bishop Street, Lake Grace.

Monday, Tuesday & Wednesday 8.30am - 4.15pm
Thursday and Friday 8.30am - 4.00pm

As an agency, we process the majority of transactions including: renewals, transfers, number plate orders, boat registration renewals and new licence applications. With every transaction we perform, we try to offer the best service possible.

We do ask all licensing customers to be considerate, even though we are aware of people being 'locals' it does not exempt us from following the rules set by the Department of Transport.

Driving Assessor

The Practical Driving Assessor (PDA) will be at the Shire of Lake Grace Office on:

Friday - 6 August

Friday - 3 September (to be confirmed)

Bookings are essential for all Practical Driver's Licence Assessments and we advise booking in advance as there is often a waiting list.

All bookings to be made at the Shire office on 9890 2500 until further notice.

Lake Grace has one assessment day each month held on the first Friday of the month.

For more information go to: www.transport.wa.gov.au.

Libraries

Lake Grace Public Library School Place Absolon St
Monday - Friday 9am - 5pm
Closed for lunch 12.30 - 1pm

Newdegate Public Library Collier St
Monday - Thursday 8.30am - 4.30pm
Closed for lunch 12noon - 1pm
Friday 9am - 2pm

Lake King Library Newdegate/Ravensthorpe Rd
Tuesday and Thursday 8.30am - 3.30pm

Building Surveyor

Building Surveyor, Gary Bruhn can be contacted through the Shire Office on 9890 2500 or email shire@lakegrace.wa.gov.au.

Town Planning & Building

The Shire's Town Planner consultant Jo Douglas, can be contacted via the Shire on 9890 2500 or email shire@lakegrace.wa.gov.au.

Environmental Health

The Shire's Environmental Health Officer, Brendon Gerrard. Can be contacted via the Shire on 9890 2500 or email shire@lakegrace.wa.gov.au.

Tip Times

Lake Grace

Monday & Wednesday 9am - 2pm
Saturday & Sunday 9am - 4pm

Newdegate

Wednesday 9am - 1pm
Saturday 9am - 1pm

Lake King and Varley

Open every day

Recycling Services

Household Waste Collection is a weekly service and collected each Tuesday for Lake Grace, Newdegate, Lake King & Varley.

Recycling is a fortnightly service and alternates between Lake Grace and Newdegate. See below for the upcoming recycling collection dates.

Lake Grace	Newdegate
Tuesday 20 July	Tuesday 27 July
Tuesday 3 August	Tuesday 10 August

Please Note: There is no kerbside recycling collection service in Lake King or Varley.

The recycling bins are collected by Warren Blackwood Waste and transported to a recycling facility. If items which are not recyclable are found the content can't be recycled and the load will be directed to the landfill.

If an item is covered in food, it is not recyclable. Food is one of the worst contaminators in the recycling process. By using the yellow top recycling bin correctly you are contributing, in a combined community effort, to reduce the amount of rubbish that is directed to landfill facilities each year.

For more information on Waste Management visit the Shire's website www.lakegrace.wa.gov.au.



Check our Facebook page

<https://www.facebook.com/ShireofLakeGrace/>



Check out our website

www.lakegrace.wa.gov.au

Inflatable Sportsfun

We would like to thank all the children and parents who came to the Inflatable Fun days.

Newdegate was held on Wednesday 7 July and there were 27 children in the young group and 17 in the afternoon.

Lake Grace was held on Thursday 8 July with 26 in the morning's young group and 18 came along in the afternoon.

Mike Cornish was great with both age groups, everyone responded to him immediately and he didn't miss much during free play with the older age groups.

The children, parents and grandparents were kept very busy while the children learnt new skills and problem solving.

