

Community Newsletter

PO Box 50, Lake Grace WA 6353 Ph: (08) 9890 2500 Fax: (08) 9890 2599 Email: shire@lakegrace.wa.gov.au



From the CEO

Shire Art Acquisition for 2022

Thank you to Councillors Roz Lloyd and Steve Hunt for this years Shire art acquisition. We acquired a oil painted by Delma White.

Delma has a passion for unique Western Australian Wildflowers from beautiful gum blossoms to the tiny carnivorous orchids. She paints in oil paints, as the strength of oil paints represents the strong colours of our bush.

She often comes through our Shire on her way to Esperance and stops during the wild flower season to capture our orchids.



Local Government Conference

Councillors and I will be attending Local Government Conference at the Crown Perth on Monday 3 and Tuesday 4 October. The theme is *Embracing Change*, the Convention will focus on how Elected Members and CEOs and Local Government staff can inform, guide and embrace change.

Newdegate Centenary

The culmination of many years of hard work came to fruition over last weekend with the Newdegate community celebrating 100 years. I had the honour of being the MC for the official part of the proceedings. Standing on the stage looking out over the crowd was testament to the strength of the community. Listening to stories of the old days and the history of the area was most enlightening. From the set up at the town oval to the Town Hall, Hainsworth Building and the Centenary Wall the atmosphere around town was electric.

And then there was the surprise "Headline Band" which had most people pondering. Absolutely sensational to say the least to pull off keeping the appearance of the WAIFS under wraps for so long and what a performance!

Congratulations to all involved with the planning of the event and pulling off what was a great day.

Reminder

The weather has started to turn with summer quickly approaching. Now is the time to get onto clearing overgrown weeds around your properties to make sure they are not posing a fire danger. This warm weather has seen them take off at an alarming rate so please take action now before things get to much out of hand. The Ranger will be inspecting properties around town in coming weeks and cleanup notices will be issued.

Coming Events

Prostate Cancer Awareness Month
1 -30 September

Local Government week
3 - 7 October

BreastScreen WA
Tuesday 11 October
LG Shire Hall

Nationwide Walk for Mental Health
Sunday 16 October

Bang Bang! Dress Rehearsal
Wednesday 19 October
Performance:
Lake Grace Shire Hall
Dinner & Show
Thursday 20 October

Ordinary Council Meeting

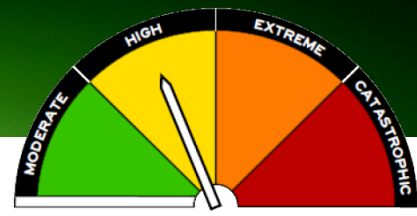
An Ordinary Council Meeting will be held on
Wednesday
28 September 2022
from 3.30pm at the Council Chambers, Administration Building.

The Agenda will be available on
www.lakegrace.wa.gov.au
Everyone Welcome

A minimum of 15 minutes is set aside for public question time, giving members of the public an opportunity to ask questions relating to Shire activities.

Alan George
Chief Executive Officer

Community Emergency Service



We are now in the restricted burning time, with permits required to burn. Please contact your nearest FCO to obtain a permit.

With the new Australian Fire Danger Rating System now in place, permits are now cancelled on days of HIGH fire danger and above which is different to before. We are also expecting less days in Autumn that will be open for burning which may be a challenge to some farm practices of early pre-seeding burning. If you have any questions, please call.

For more information:

<https://www.dfes.wa.gov.au/hazard-information/bushfire/prepare#fire-danger-ratings>

Matt Castaldini

Community Emergency Services Manager

Important Dates to Remember

Prohibited Burning Times:

November 2022 to 31 January 2023—during this period you must not start a fire in the open air.

The penalty \$10,000 or 12 months imprisonment or both.

Restricted Burning Times (Permits Required)

19 September 2022 to 31 October 2022

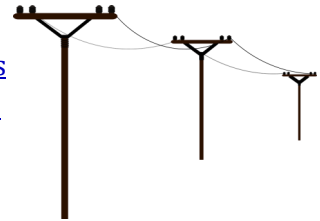
1 February 2023 to 30 April 2023

Any date changes will be published on the Shire of Lake Grace website at: www.lakegrace.wa.gov.au

Extended Power Outages

The \$80 payment is an acknowledgement of the inconvenience for customers who have experienced a long unplanned outage while waiting for repairs to be completed and restoration of power to occur.

Go to: <https://www.westernpower.com.au/faults-outages/make-a-claim/extended-outage/>



 Community Citizen of the Year Awards

Nominate now

Presented by:



Australia Day
Council of
Western Australia

Principal Partner:



Government of Western Australia
Department of Communities

Media Partners:



WAtoday
INDEPENDENT. ALWAYS.



There are four awards categories:

- Community Citizen of the Year
- Community Citizen of the Year – Youth (under 25 years of age)
- Community Citizen of the Year – Senior (over 65 years of age)
- Active Citizenship – group or event

CLOSING MONDAY 31 OCTOBER

Community Information

Office Open Hours

Monday - Friday
8.30am - 4.00pm

Staff can be contacted by phone between 8am - 5pm

Licensing Payments

All licensing payments are to be made in person at the Shire of Lake Grace Administration office, 1 Bishop Street, Lake Grace, *(please phone ahead to confirm availability)*

Monday to Friday from 8:30am to 4:00pm

As an agency, we process the majority of transactions including: renewals, transfers, number plate orders, boat registration renewals and new licence applications. With every transaction we perform, we try to offer the best service possible.

We do ask all licensing customers to be considerate, even though we are aware of people being 'locals' it does not exempt us from following the rules set by the Department of Transport.

Driving Assessor

The Practical Driving Assessor (PDA) will be at the Shire of Lake Grace Office on:

Friday - Friday 28 October (changed for October)

Friday - Friday 4 November (to be confirmed)

Bookings are essential for all Practical Driver's Licence Assessments and we advise booking in advance as there is often a waiting list.

All bookings to be made at the Shire office on 9890 2500 until further notice.

Lake Grace has one assessment day each month held on the first Friday of the month.

For more information go to: www.transport.wa.gov.au.

Libraries

Lake Grace Public Library School Place Absolon St
Monday - Friday 9am - 5pm
Closed for lunch 12.30 - 1pm

Newdegate Public Library Collier St
Monday - Thursday 8.30am - 4.30pm
Closed for lunch 12noon - 1pm
Friday 9am - 2pm

Lake King Library Newdegate/Ravensthorpe Rd
Tuesday and Thursday 8.30am - 3.30pm

Building Surveyor

Building Surveyor, can be contacted through the Shire Office on 9890 2500 or email shire@lakegrace.wa.gov.au.

Town Planning & Building

The Shire's Town Planner consultant Joe Douglas, can be contacted via the Shire on 9890 2500 or email shire@lakegrace.wa.gov.au.

Environmental Health

The Shire's Environmental Health Officer, Brendon Gerrard. Can be contacted via the Shire on 9890 2500 or email shire@lakegrace.wa.gov.au.

Tip Times

Lake Grace

Monday & Wednesday 9am - 2pm
Saturday & Sunday 9am - 4pm

Newdegate

Wednesday 9am - 1pm
Saturday 9am - 1pm

Lake King and Varley

Open every day

Recycling Services

Household Waste Collection is a weekly service and collected each Tuesday for Lake Grace, Newdegate, Lake King & Varley.

Recycling is a fortnightly service and alternates between Lake Grace and Newdegate. See below for the upcoming recycling collection dates.

Lake Grace	Newdegate
Tuesday 11 October	Tuesday 4 October
Tuesday 25 October	Tuesday 18 October

Please Note: There is no kerbside recycling collection service in Lake King or Varley.

The recycling bins are collected by Warren Blackwood Waste and transported to a recycling facility. If items which are not recyclable are found the content can't be recycled and the load will be directed to the landfill.

If an item is covered in food, it is not recyclable. Food is one of the worst contaminants in the recycling process. By using the yellow top recycling bin correctly you are contributing, in a combined community effort, to reduce the amount of rubbish that is directed to landfill facilities each year.

For more information on Waste Management visit the Shire's website www.lakegrace.wa.gov.au.



Check our Facebook page
<https://www.facebook.com/ShireofLakeGrace/>

THE BLUE ROOM THEATRE | SCOTT ELSTERMANN &
SHONA ERSKINE PRESENT

BANG! BANG!

MURDER, MELODRAMA AND WES ANDERDSON:
A THEATRICAL DANCE DOUBLE-HEADER

DINNER & SHOW
LAKE GRACE HALL
THURSDAY 20 OCTOBER
DOORS OPEN 6.30PM

Tickets and more information:
<https://events.humanitix.com/bb-lg>

